

## Parnassus Update

### Thursday, August 27, 2020

## Today's New Updates & Reminders



### Riding the School Bus

As students enter the school buses this year, they will notice that things will look different from the way they have looked in the past. Perhaps one of the first things they will notice is that we have fewer students on the bus. Buses will only be filled to 50 percent capacity or less and social distancing will be in place. Before entering the bus, all students must be wearing a mask. Below are few reminders for all students who will be riding school-provided transportation:

- Students must be screened at home before boarding the bus for COVID-19 symptoms (NOTE: Please refer to the self-screening process for families at the end of this update)
- Students must wear a face mask in accordance with the Parnassus face mask policy
- Physical distancing should be taking place at bus stops except for students who are members of the same household.
  - A quick way to explain physical distancing is tell the students to put their arms out like airplanes without their arms touching one another – two armlengths is a good rule of thumb.
- When students board the bus, hand sanitizer will be available for them to use.
- Students must load from rear of bus forward –members of the same household will be required to sit together – (up to 3 in a seat).
- Each seat will be marked with the number of students who may sit there. The exception will be members of the same household.
- Students must disembark bus one seat at a time – maintaining physical distancing in the process.

### Where can I find my child's busing information in Infinite Campus?

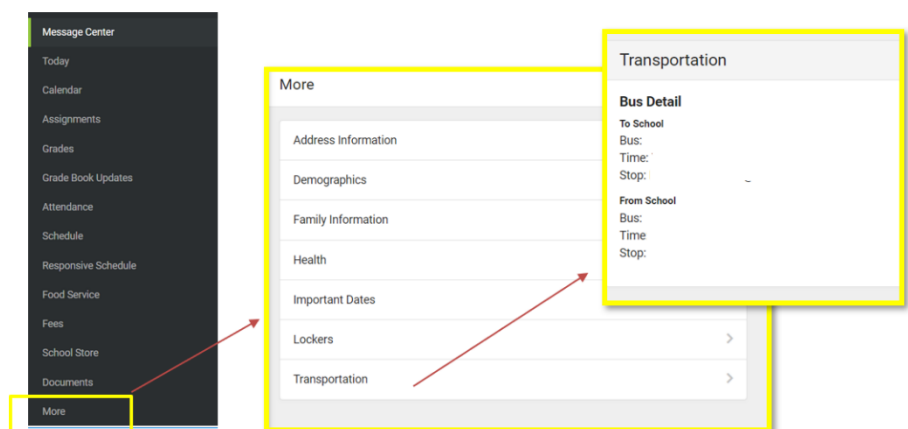
If you are having difficulty finding your child's busing information in Infinite Campus, please follow the steps below.

1. Visit the Infinite Campus Parent Portal site using the link below in your web browser:  
<https://mncloud2.infinitecampus.org/campus/portal/parents/parnassus.jsp>

2. When you sign in, there is a menu on the left side of the page (see screenshots below). Click on the "More" option at the bottom of the menu.

3. A new menu will open. Click the "Transportation" option at the bottom of the menu.

4. Your child's bus information will be displayed, including the bus number, time, and stop location information.





## School of Logic (SOL) Updates from Principal Kasowicz

### Starting the Day in the School of Logic (SOL)

School of Logic students who are dropped off in the morning, will proceed to the blacktop where there will be four cones to line up at. Please ensure your mask is on at all times and social distancing is followed. Teachers will lead students in, starting at 7:45am. Students will enter through their assigned doors. If you arrive to school after 7:50am, you will need to go through Door A (Main Door) to enter.

### Lunch in the School of Logic

Students will be eating lunch in their classrooms to minimize interpersonal contact. Students will have the full lunch period to eat; however, we encourage students to minimize the time when their masks are off as much as possible. We will be going through proper and safe mask handling (and storing when eating) with the students at school. As a reminder, no use of microwaves will be allowed this year.

### End of Day Dismissal

School of Logic students who are picked up, will be dismissed through Doors W and X. We ask students to proceed directly to their transportation source. Students who are asked by their parents to pick up younger siblings in School of Grammar, will be able to meet them in the Quad area outside.

### Communication

I will continue to communicate with families via our regular means of the *Columns* (school newspaper) and monthly Parents helping Parnassus (PhP) meetings. In addition to those avenues, I will also hold recurring *Coffee with the Principal* virtual meetings for parents, as I did last spring. I know you will have questions along the way, and I appreciate them, as they will help us fine tune our processes and procedures as needed. I can promise you that I look at each year through the lens of safety and security for all students and staff, and this year is no different in that regard. Will it look different at times? Yes! However, the mission is still the same. Thank you for your support and emails throughout the summer. I am eager to have them all back in person or through distance learning!

---

## A Message for All Parnassus Students

### *Starting school in the hybrid and distance learning model*

Dear Parents and Guardians,

Our teachers are looking forward to all of our scholars returning to school. As you are aware, Cohort-A hybrid learners will be in person, at school, on Monday, August 31<sup>st</sup>. Our Cohort-Z hybrid and fulltime Distance Learning students will be learning from home on Monday as their first day of school. Teachers will be reaching out to all families on their rosters, including our hybrid learners and the Distance Learners, with additional information about the start of school before it begins on Monday, August 31<sup>st</sup>.

If you are a Distance Learning scholar, you will be sent a sign-up wizard for a pickup time to collect any school material you will need which may include books and applicable supplies such as art or math manipulatives. Electronics will be distributed at a later date. Please watch for this email soon. In order to keep our staff, faculty, and scholars safe, you will be asked to choose a timeslot either on Monday (August 31<sup>st</sup>) or Tuesday (September 1<sup>st</sup>) between 9:00am and 2:00pm. When picking up your materials, please come during your assigned time and remember that masks are required everywhere on our school campus including the outdoor areas. Material pick up will be at the main entrance.

We would like to thank you for your patience as we navigate the beginning of this unprecedented year. We are committed to helping you have a strong start to the school year and look forward to welcoming each of you to school – in person or through distance learning!

Ms. Weiland  
Distance Learning Coordinator  
763-496-1416 ext. 318/[www.parnassusprep.com](http://www.parnassusprep.com)



## Student Technology Devices

If you requested a device for your child to use during the school year, please note that we will be assigning devices to students as soon as they are available. We are working hard to get them ready for use as soon as possible and appreciate your patience!

## First Day of School – Monday, August 31<sup>st</sup>

Our first day of school is Monday, August 31<sup>st</sup>!

- Cohort-A (Athena) students have in-person class today
- Cohort-Z (Zeus) students have distance learning today
- Distance Learning students begin today



## Second Day of School – Tuesday, September 1<sup>st</sup>

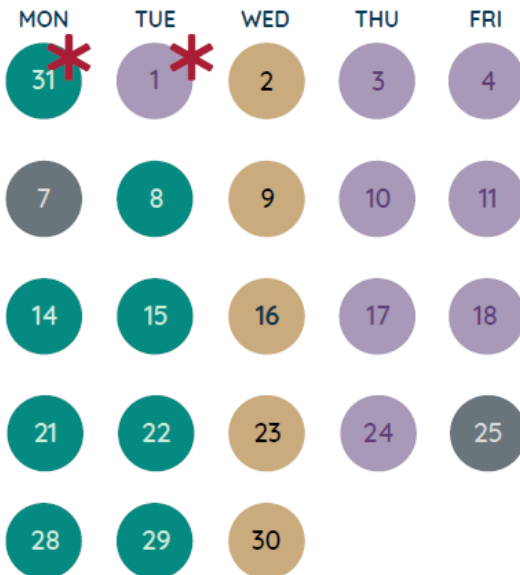
- Cohort-Z (Zeus) students have in-person class today (on Tuesday this week only)
- Cohort-A (Athena) students have distance learning today (on Tuesday this week only)
- Distance Learning students continue second day of distance learning

## Parnassus Hybrid Learning Model Calendar for First Quarter

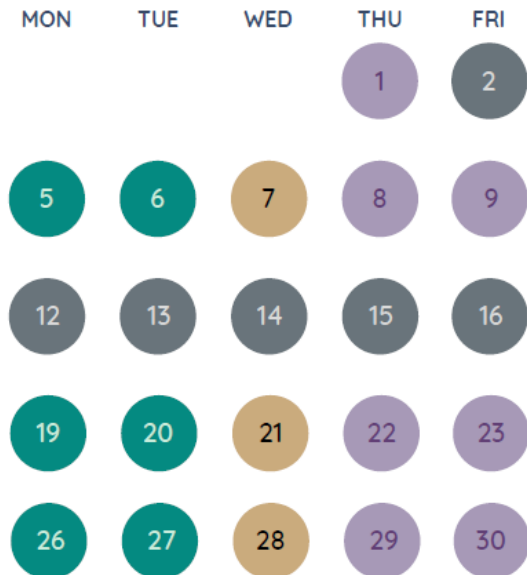


If the hybrid learning model extends beyond the first quarter of the school year, a revised calendar will be provided to families.

### August & September 2020



### October 2020



#### KEY:

- No Classes for Students
- A Group comes to school for in-person Instruction
- Z Group comes to school for in-person Instruction
- Distance Learning - All Students

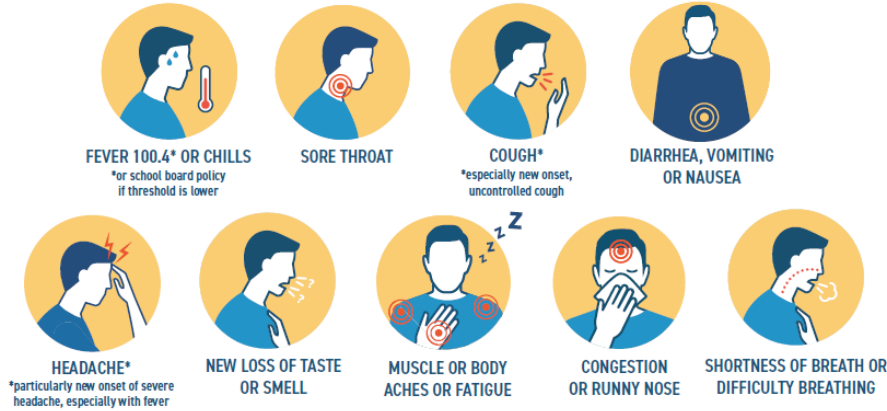
\* IMPORTANT: In order to provide students with a "first day of school" experience and to prepare for the first school-wide distance learning day on Wednesday, September 2nd, students will have a modified schedule on these days.

# COVID-19 Screening for Parents

Every morning before you send your child to school please check the following:

- 1 Your student does **NOT** have a fever greater than 100.4 degrees (may be lower based on your school's policy) **OR** lower if your child is not feeling well.

Other signs of illness such as:



- 2 Were you in close contact (within 6 feet for more than 15 minutes) with anyone confirmed with COVID-19 within the last two weeks?
  - 3 If the answer is **YES** to any of the questions, **DO NOT** send your student to school. Instead, begin isolation of your child and contact your healthcare provider. Strongly consider COVID-19 testing.
- ➔ If you have trouble breathing, chest pain, new confusion, inability to wake or stay awake or bluish lips or face **CALL 911!**

Updated: 8/20/20



## COVID-19: When a student, faculty or staff member can return to school

Individual	Symptomatic	No Symptoms
Not Tested <b>with</b> Alternate Explanation (ear or urinary tract infection, etc. as determined by a provider)	May return to school after 24 hours resolution of fever <b>AND</b> note (including email and fax) from provider stating the individual has an alternate diagnosis and the provider believes it's appropriate for the patient to return to school.	N/A
Not Tested <b>Without</b> Alternate Explanation	Must remain home for at least 10 days from the first day symptoms appeared <b>AND</b> 24 hours fever-free without fever-reducing medicine and with improvement of symptoms.	N/A
Tested and Negative	1) If no alternative explanation, <i>isolate</i> for at least 10 days from the first day symptoms appeared <b>AND</b> 24 hours fever-free without fever-reducing medications and with improvement of symptoms. <b>OR</b> 2) The individual can return to school if tested negative <b>AND</b> with a note from the provider stating they believe the patient to have an alternate diagnosis and it's appropriate for the patient to return to school.	1) May proceed with attending school as long as individual has no exposure to a positive case. <b>OR</b> 2) A known close contact (within 6 feet of a confirmed case for more than 15 minutes) must complete a 14-day <i>quarantine</i> , even if test results are negative for COVID-19.
Tested and Positive	Must remain home in <i>isolation</i> for at least 10 days from the date symptoms began <b>AND</b> individual is 24-hours fever free, symptoms have improved. (CDC does not recommend test-based strategy except in certain circumstances, including provider's advice and test availability.)	<i>Isolate</i> at home for 10 days from the day the test was taken. (CDC does not recommend test-based strategy except in certain circumstances, including provider's advice and test availability.) <i>*If the individual develops symptoms, then isolation time starts on day 1 of symptoms (see symptomatic tests positive.)</i>
Close Contact (within 6 feet for more than 15 minutes of someone with confirmed COVID-19)	N/A If an individual becomes symptomatic, refer to the symptomatic scenarios. The individual must <i>quarantine</i> for 14 days after contact with the COVID-19 Positive person even if the student has an alternate diagnosis for symptoms.	<i>Quarantine</i> for 14 days before returning to school. Must remain symptom-free. If individual develops symptoms, then refer to the symptomatic scenarios.

Note: **QUARANTINE** keeps someone who was in close contact with someone who has COVID-19 away from others.  
**ISOLATION** keeps someone who is sick or tested positive for COVID-19 without symptoms away from others, even in their own home.

Updated: 8/20/20



# LOOKING AHEAD:

## August 2020

- 31 School begins!  
Cohort-A students have in-person class today  
Cohort-Z students have distance learning today  
Distance Learning students begin today
- 31 Lunch order for Sept 8<sup>th</sup> – Sept 11<sup>th</sup> due today
- 31 Cross Country Practice 3:45-5:15pm - Quad

## September 2020

- 01 Cohort Z students have in-person learning today (all other students in distance learning)
- 01 Cross Country Practice 3:45-5:15pm - Quad
- 02 All-school distance learning today – no in-person classes
- 02 Cross Country Practice 3:45-5:15pm - Quad
- 03 Cohort Z students have in-person learning today (all other students in distance learning)
- 03 Thursday Update Sent Today
- 03 Cross Country Meet at Elm Creek Park, Time TBD
- 04 Cohort Z students have in-person learning today (all other students in distance learning)
- 04 August reading minutes due today
- 04 Lunch order for Sept 14<sup>th</sup> – Sept 18<sup>th</sup> due today
- 04 SOG Parent Coffee House with Principal Omberg 10:00 a.m. on Zoom  
<https://uso4web.zoom.us/j/73407997451?pwd=djBzRVNrY0lHYzBkNGJOK2tNMjRLdz09> Meeting ID: 734 0799 7451 /  
Passcode: SOG
- 04 Cross Country Practice 3:45-5:15pm - Quad
- 07 NO SCHOOL (Labor Day) - **SEE THE COHORT CALENDAR FOR THE COHORT SCHEDULE FOR THIS WEEK**
- 08 Parents helping Parnassus (PhP) virtual meeting with the school principals 8:15-9:15am on Zoom – all parents and guardians are welcome and encouraged to join us!  
<https://uso2web.zoom.us/j/83530516761?pwd=VWJOMnhCUnhUTkVoTXJGMFNhRFhRZz09>  
Meeting ID: 835 3051 6761; Passcode: PhP
- 08 Cross Country Practice 3:45-5:15pm - Quad
- 08 Board Meeting 6:00pm
- 09 SOR Parent Coffee House with Principal Hamiel 10:00 a.m. on Zoom
- 09 Cross Country Practice 3:45-5:15pm - Quad
- 10 Thursday Update Sent Today
- 10 Cross Country Practice 3:45-5:15pm - Quad
- 11 SOR Parent Coffee House with Principal Hamiel 10:00 a.m. on Zoom
- 11 Cross Country Practice 3:45-5:15pm - Quad
- 11 Summer Reading Contest Entries Due by Midnight

**PARNASSUS PREPARATORY SCHOOL**  
**11201 96<sup>th</sup> Avenue North**  
**Maple Grove, MN 55369**



Main Number	(763) 496.1416
After-Hours EMERGENCIES (only)	(763) 691.9689
American Student Transportation	(763) 425.2542
Attendance	Ext. 119
SOG Main Office	Ext. 247
SOL & SOR Main Office	Ext. 201
Animus & Accendo After-School Programs	Ext. 247